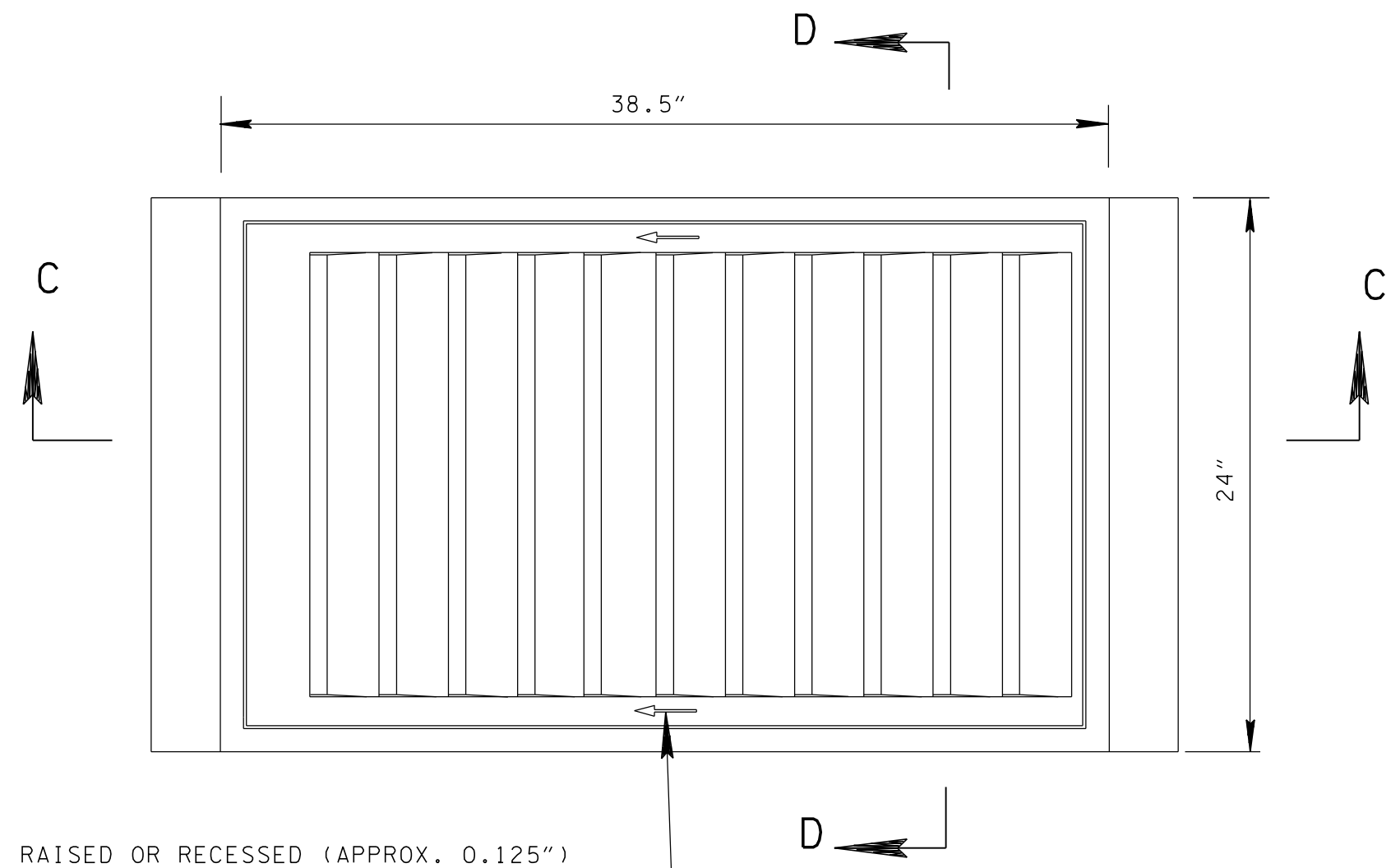
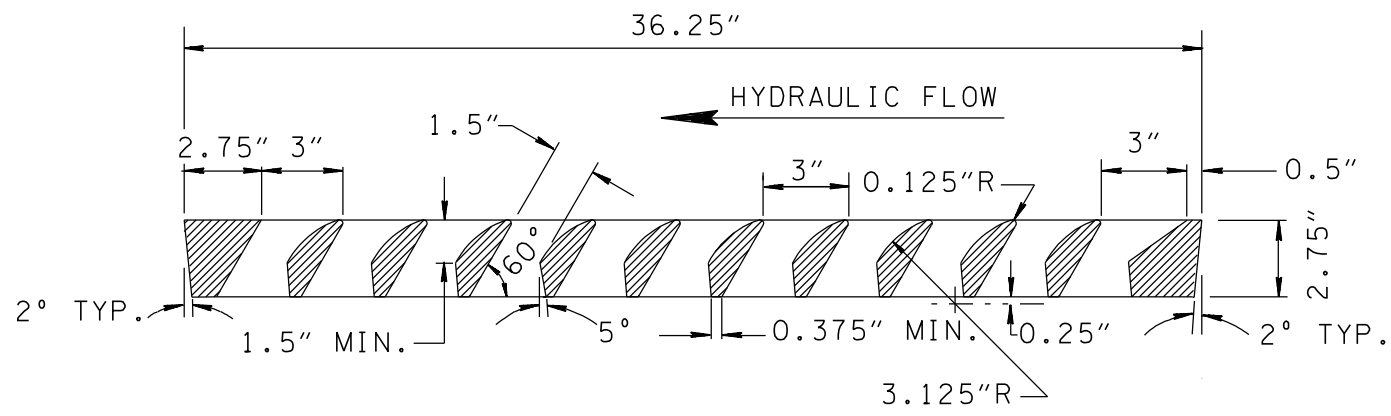


GRATE AND FRAME DETAILS

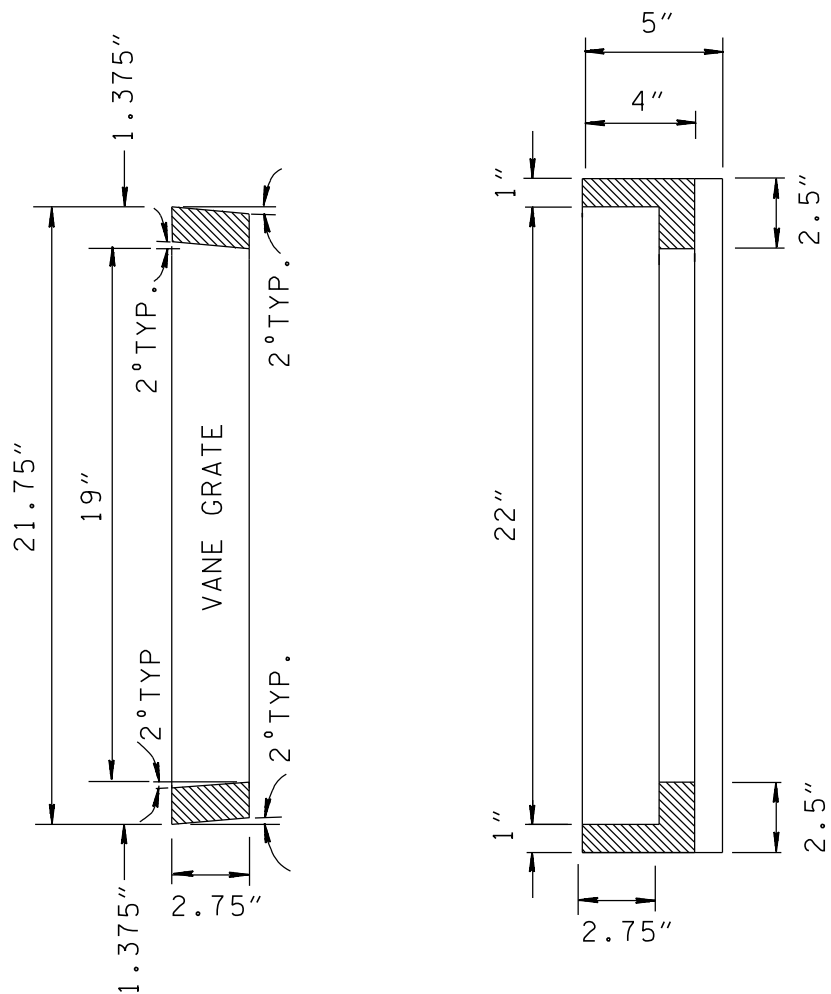


RAISED OR RECESSED (APPROX. 0.125")
ARROWS INDICATE DIRECTION OF HYDRAULIC
FLOW. DESIGN OF ARROWS IS
MANUFACTURERS CHOICE.

PLAN VIEW

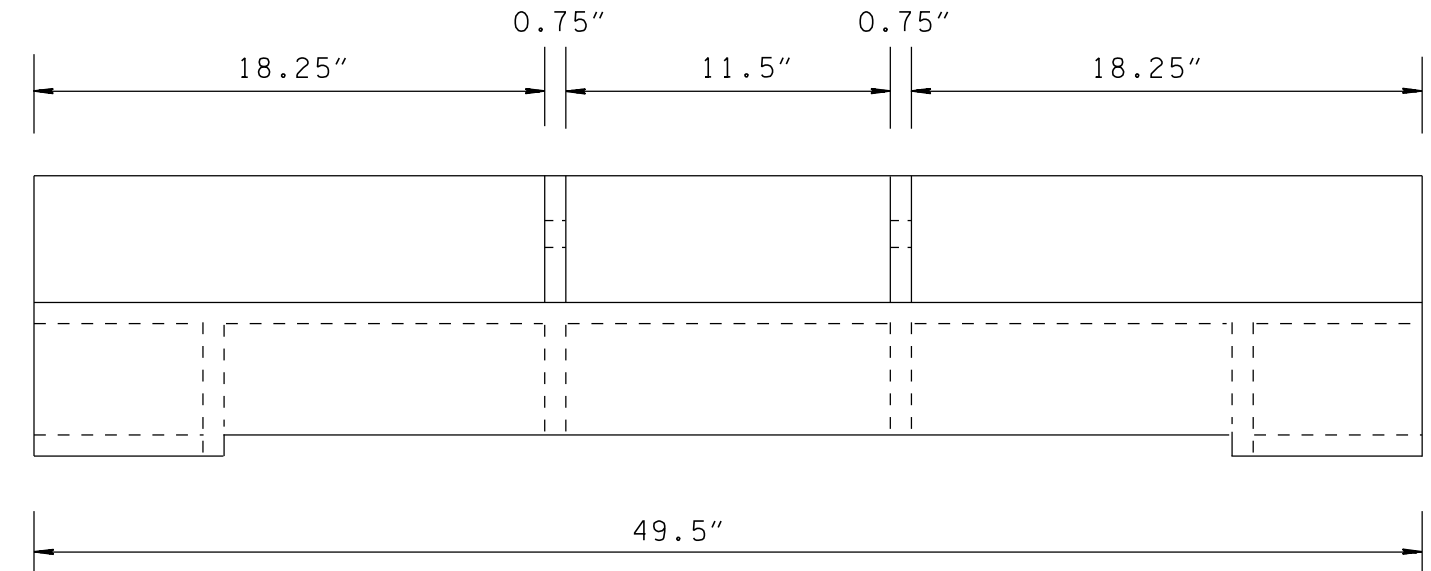


SECTION C-C

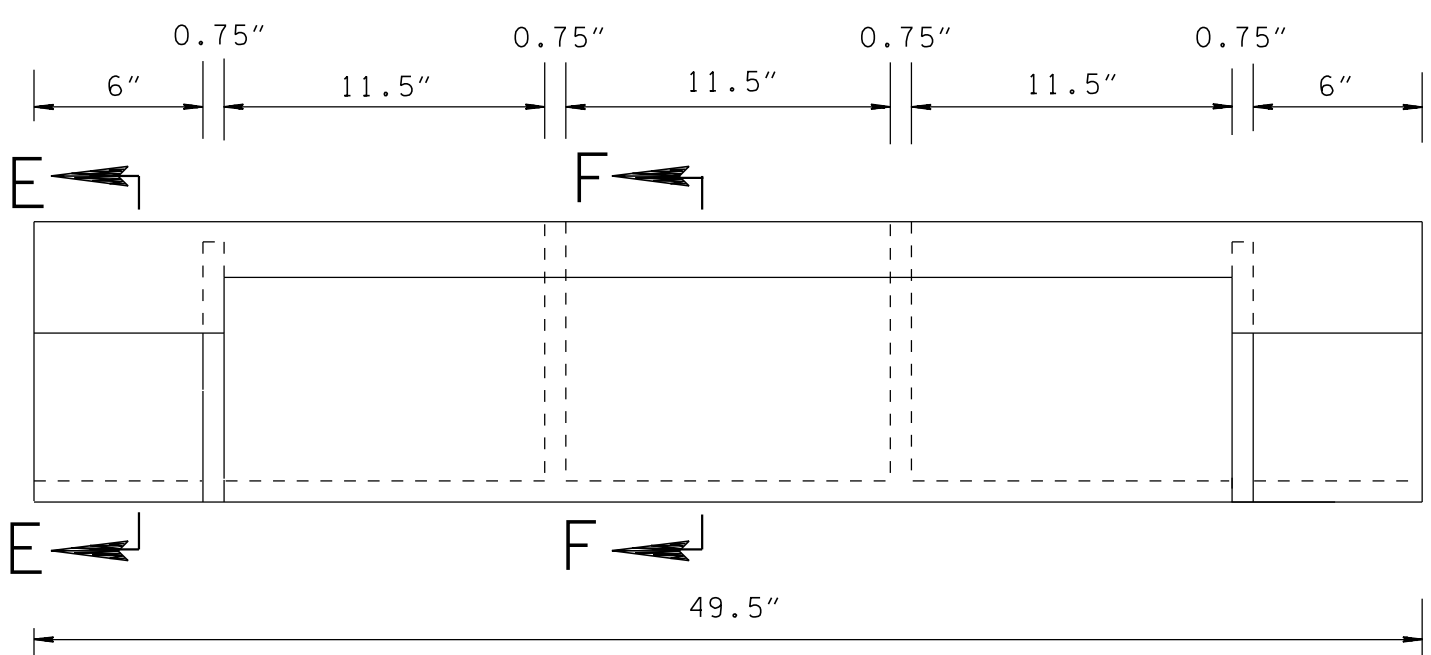


SECTION D-D

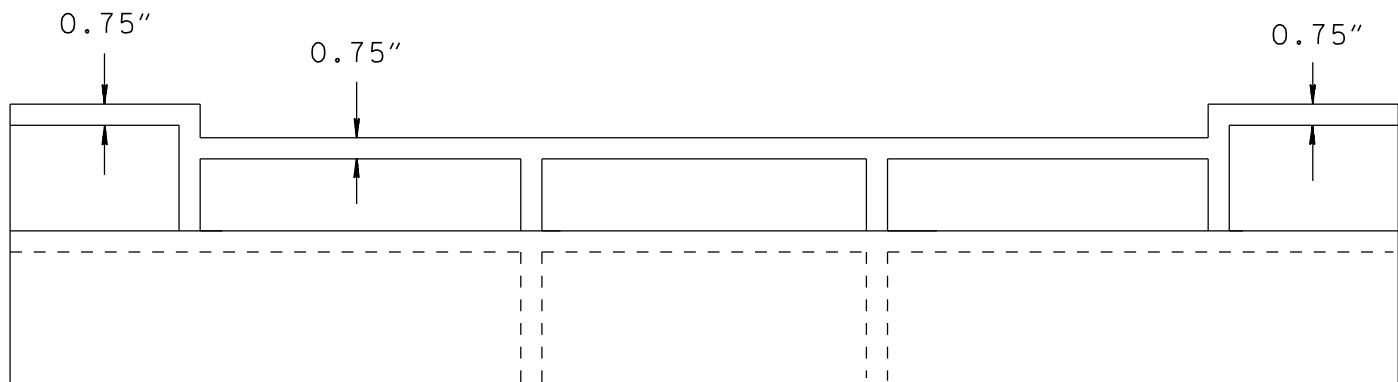
CURB INLET CASTING



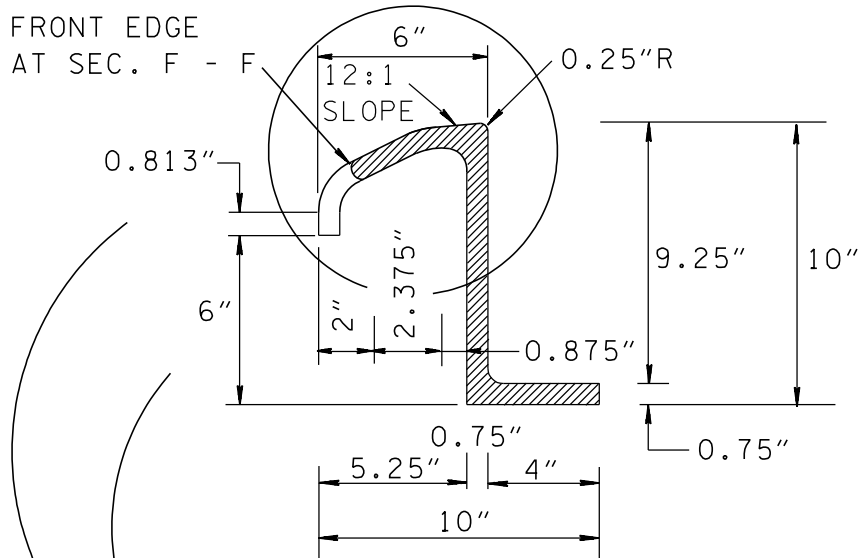
TOP



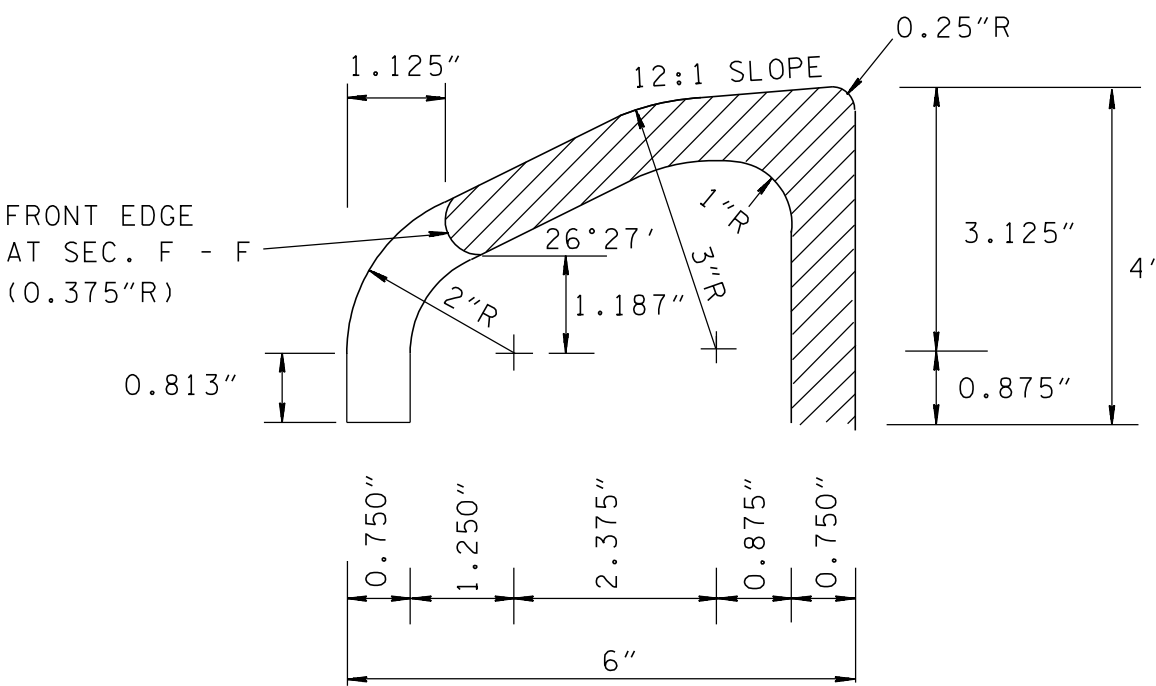
FRONT



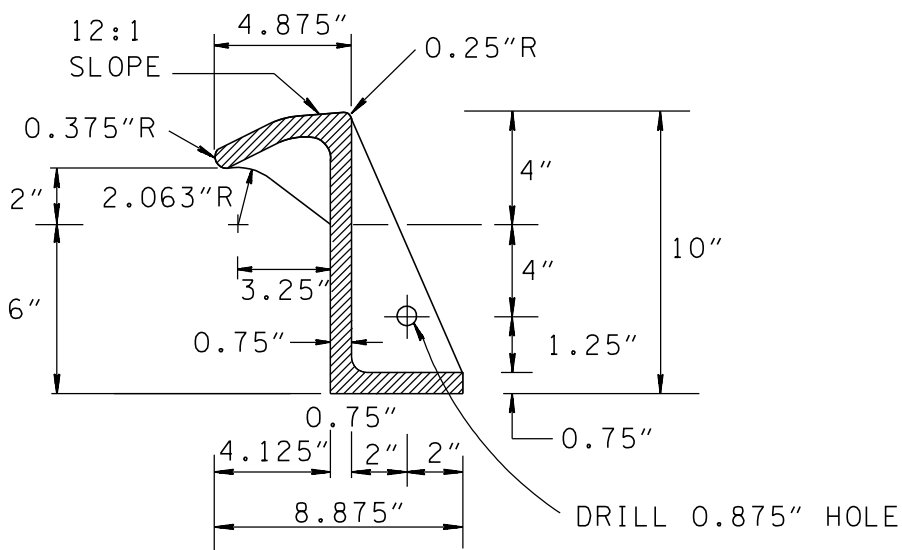
BOTTOM



SECTION E - E



ENLARGED VIEW TAKEN FROM
SECTION E - E



SECTION F - F

GENERAL NOTES

- (A) WHEN A FOUR (4) INCH MOUNTABLE CURB IS REQUIRED USE THIS DRAWING ON ALL VARIATIONS OF NUMBER 28 AND 29 CATCH BASINS CONTAINED IN THIS SECTION OF THE STANDARD DRAWINGS.
- (B) FOR CLEARNESS, ALL CORNERS ARE SHOWN ON THIS DRAWING BY STRAIGHT LINES WITH THE EXCEPTION OF THE 1" RADIUS AT THE TOP OF FACE OF CURB. ALL INSIDE CORNERS SHOULD BE MADE WITH 1/2" X 1/2" FILLETS OR 3/4" RADIUS FILLETS FOR EASE IN MOULDING.
- (C) IF PAID FOR SEPARATELY CAST IRON USED IN CASTINGS IS TO BE PAID FOR UNDER ITEM NO. 611-03.04 GRAY IRON CASTINGS (CATCH BASIN) PER POUND.
- (D) IF CATCH BASIN IS PAID FOR UNDER EACH, THEN COST OF CAST IRON USED IN CASTINGS IS TO BE PAID FOR UNDER THE SPECIFIC ITEM BID FOR THAT CATCH BASIN. SEE STANDARD DRAWINGS FOR TYPE 28 AND 29 CATCH BASINS FOR APPLICABLE PAY ITEMS FOR EACH TYPE OF CATCH BASIN.

FRACTION TABLE

1/16"	-	0.063"
1/8"	-	0.125"
3/16"	-	0.187"
1/4"	-	0.250"
3/8"	-	0.375"
1/2"	-	0.500"
5/8"	-	0.625"
11/16"	-	0.688"
13/16"	-	0.813"
3/4"	-	0.750"
7/8"	-	0.875"

WEIGHTS

(SINGLE GRATE CATCH BASIN)
FRAME ----- 265 LBS.
GRATE ----- 250 LBS.
CURB INLET ---- 220 LBS.
* TOTAL ----- 735 LBS.
* NOTE: WEIGHT OF TWO GRATES = 1,470 LBS.

MINOR REVISION -- FHWA
APPROVAL NOT REQUIRED.

STATE OF TENNESSEE
DEPARTMENT OF TRANSPORTATION

TYPE 'B'
CAST IRON FRAME, GRATE
& 4" MOUNTABLE INLET
DETAILS FOR NOS.
28 & 29
TYPE CATCH BASINS

9-5-94 D-CBB-12C